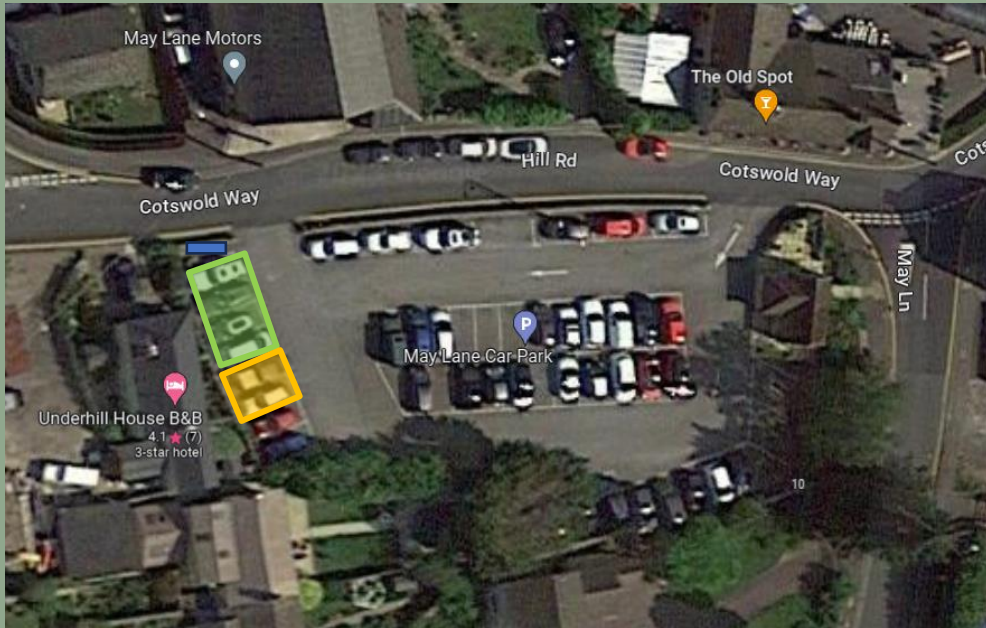


Stroud District Council

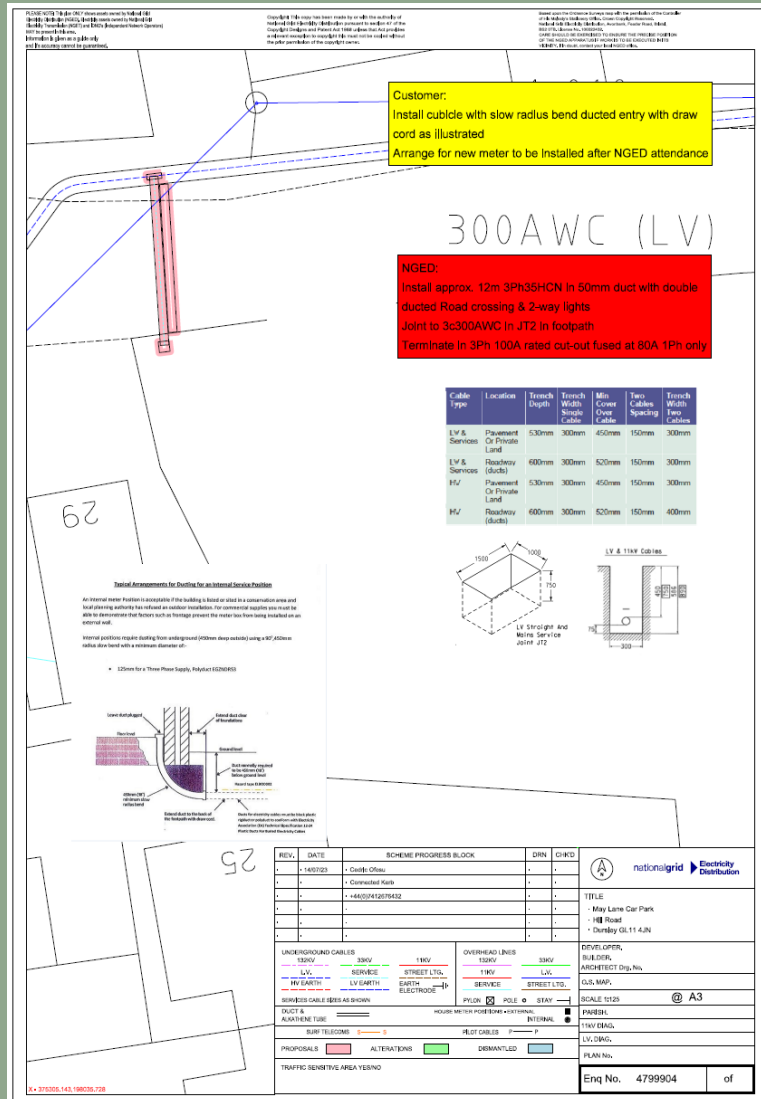
Site selection

May Lane Car Park *

Street: Hill Road	Latitude: 51.680821
Post code: GL11 4JN	Longitude: -2.3584567
Town: Dursley	Number/Type of EVCP: 2x dual 7kw (only two bays marked) + 1x passive node box
Notes: Restriction on extending as they are by the exit. Metal barrier is an obstacle. Bollards can be used instead of wheel stops to protect the EVCPs	

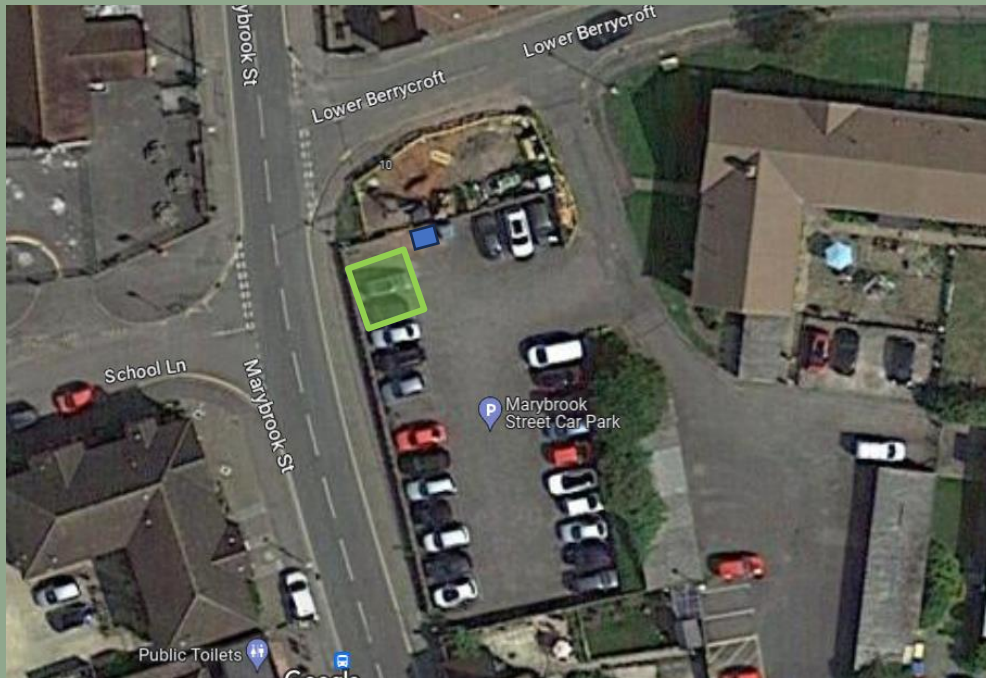


May Lane Car Park

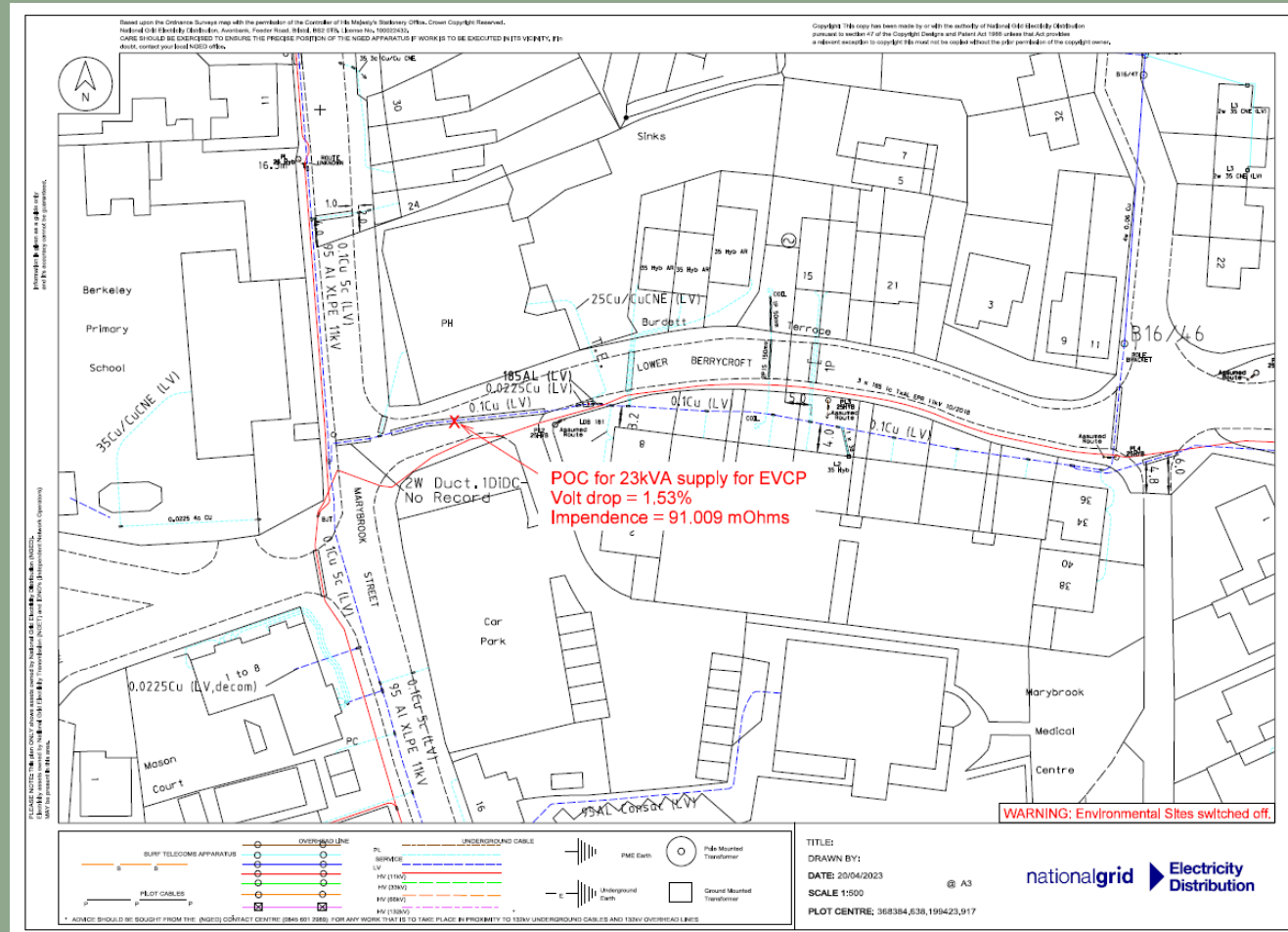


Marybrook Car Park *

Street: Marybrook Street	Latitude: 51.69256663855135
Post code: GL13 9FD	Longitude: -2.459318763823699
Town: Berkeley	Number/Type of EVCP: 1 x dual 7kw Gecko
Notes: FP located next to clothes container (blue rectangle)	

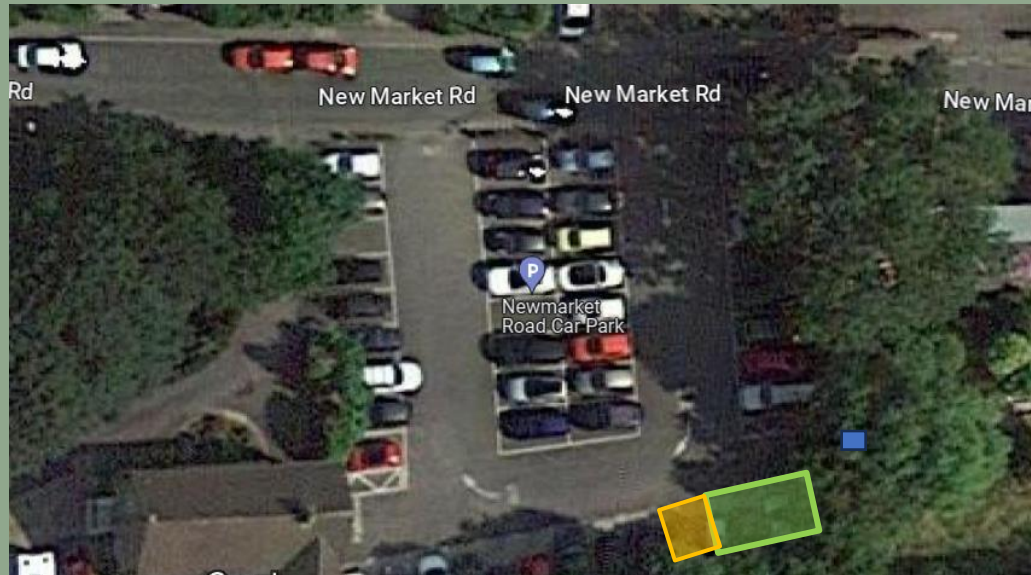


Marybrook Car Park

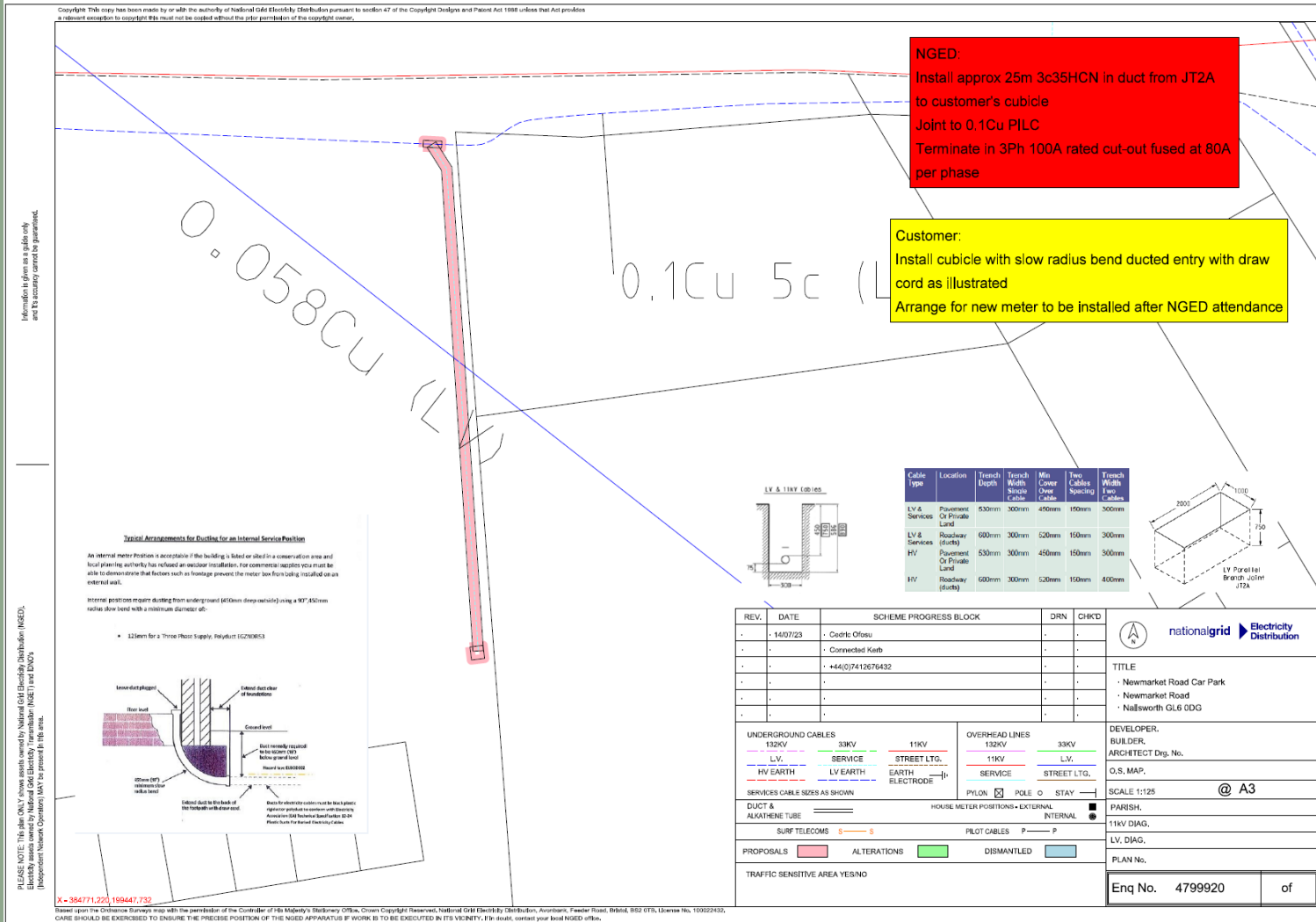


Newmarket Road Car Park

Street: Newmarket Road	Latitude: 51.69382575817938
Post code: GL6 0DG	Longitude: -2.2219580171966546
Town: Nailsworth	Number/Type of EVCP: 2 x dual 7kw Gecko + 1x passive
Notes: Bays located at the top of the car park. Long trenching route from POC. Possible Car Park closure required.	



Newmarket Road Car Park



Information given as a guide only and its accuracy cannot be guaranteed.

PLEASE NOTE: This plan may have been prepared by National Grid Electricity Distribution (NGED). Electricity assets owned by National Grid Electricity Distribution (NGED) and owned by other Network Operators (NOCs) may be present in this area.

X = 384771.220, 169447.730

Based upon the Ordnance Survey map with the permission of the Controller of His Majesty's Stationery Office, Crown Copyright Reserved, National Grid Electricity Distribution, Ascot, Maidenhead, RG5 0TB, Licence No. 100029230. CARE SHOULD BE EXERCISED TO DETERMINE THE PRECISE POSITION OF THE WORKS TO BE EXECUTED IN ITS VICINITY. It is made, under your local NGED office.

REV.	DATE	SCHEME PROGRESS BLOCK	DRN	CHK'D
-	14/07/23	Ceotic Ofosu	-	-
-	-	Connected Kerb	-	-
-	-	+44(0)7412676432	-	-
-	-	-	-	-
-	-	-	-	-
-	-	-	-	-
-	-	-	-	-
-	-	-	-	-

		TITLE - Newmarket Road Car Park - Newmarket Road - Nailsworth GL6 0DG
DEVELOPER: BUILDER: ARCHITECT Drg. No.	O.S. MAP: SCALE 1:125 @ A3	
PARISH: 11KV DIAG.	LV DIAG. PLAN No.	
Enq No. 4799920		of

Stamages Lane Car Park

Street: Court Orchard

Latitude: 51.78410368554129

Post code: GL6 6UZ

Longitude: -2.1967407881

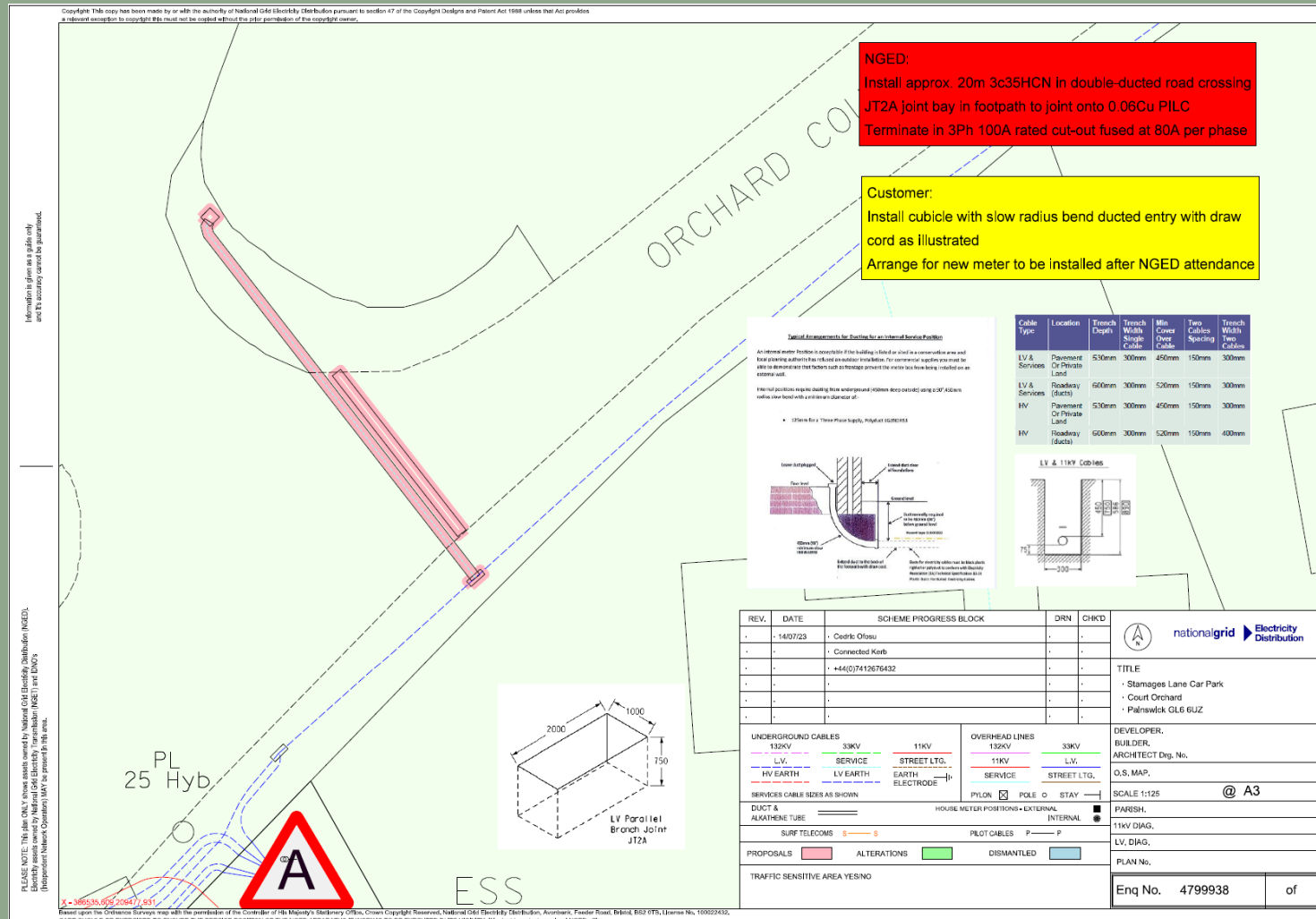
Town: Painswick

Number/Type of EVCP: 2 x dual 7kw Gecko + 1 x passive

Notes: Due to metal barrier bays may need to be extended.



Stamages Lane Car Park



PLEASE NOTE: This plan ONLY shows work owned by National Grid Electricity Distribution (NGED). Electricity assets owned by National Grid Electricity Transmission (NGET) and DNOs (Independent Network Operators) may be present in this area.

X - 355535.67/2047.051

Based upon the Ordnance Survey map with the permission of the Controller of His Majesty's Stationery Office, Crown Copyright Reserved. National Grid Electricity Distribution, Avonbank, Forder Road, Bickel, BS3 0PL, License No. 10002433. CARE SHOULD BE EXERCISED TO ENSURE THE PRECISE POSITION OF THE NOTED APPARATUS IF WORK IS TO BE EXECUTED IN ITS VICINITY. If in doubt, contact your local NGED office.

High Street Car Park

Street: High Street

Latitude: 51.74734827963224

Post code: GL10 2NG

Longitude: -2.282407248770628

Town: Stonehouse

Number/Type of EVCP: 1x dual 7kw Gecko

Notes: POC might be located on private land. Stroud DC investigating. Bays may require extension.



High Street Car Park

Copyright: This copy has been made by or with the authority of National Grid Electricity Distribution pursuant to section 47 of the Copyright Designs and Patent Act 1988 unless that Act provides a relevant exception to copyright. It must not be copied without the prior permission of the copyright owner.

Information is given as a guide only and its accuracy cannot be guaranteed.

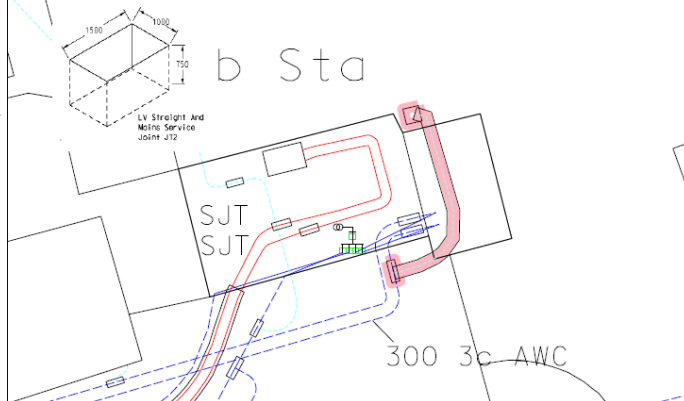
PLEASE NOTE: This plan only shows assets owned by National Grid Electricity Distribution (NGED). Electricity assets owned by National Grid Electricity Transmission (NGET) and ENOs (Distribution Network Companies) have not been shown in this area.

X = 380575, 359, 205404, 942

Revised upon the Reference Drawing: This will be the permission of the Controller of His Majesty's Stationery Office. Crown Copyright Reserved. National Grid Electricity Distribution, Ascot Road, Windsor, Berkshire, UK. Licence No. 100022432. CARE SHOULD BE EXERCISED TO ENSURE THE PRECISE POSITION OF THE NGED APPARATUS IF WORK IS TO BE EXECUTED IN ITS VICINITY. If in doubt, contact your local NGED office.

79/3140 (10818)
STONEHOUSE POLICE STA.

3 x 185 1c XLPE 11kV
Tails 11/2013



Cable Type	Location	Trench Depth	Trench Width Single Cable	Min Cover Over Cable	Two Cables Spacing	Trench Width Two Cables
LV & Services	Pavement Or Private Land	530mm	300mm	450mm	150mm	300mm
LV & Services	Roadway (ducts)	600mm	300mm	520mm	150mm	300mm
HV	Pavement Or Private Land	530mm	300mm	450mm	150mm	300mm
HV	Roadway (ducts)	600mm	300mm	520mm	150mm	400mm

Car

NGED:
Excavate JT2 Joint Bay in Tarmac
Install 50mm Alkathene duct from JT2 to customer's cubicle
Install approx. 8m 3c35HCN
Joint to 3c300AWC
Terminate in 100A 3Ph rated cut-out fused at 80A per phase

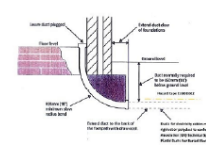
Customer:
Install cubicle with slow radius bend ducted entry with draw cord as illustrated
Arrange for new meter to be installed after NGED attendance

Special Arrangements for Cluttering for an Internal Service Position

An internal service position is acceptable if the building is used for commercial use and local planning authority has issued an outdoor installation. For commercial use you must be able to demonstrate that the work will be covered by the street lighting regulations as an external work.

Internal positions must be built from a minimum 150mm deep subsoil with a 150mm wide subsoil and a minimum 150mm wide subsoil.

• 150mm for a Street Light Supply, Height 1500mm



REV.	DATE	SCHEME PROGRESS BLOCK	DRN	CHKD
-	14/07/23	- Cedric Ofosu	-	-
-	-	- Connected Kerb	-	-
-	-	- +44(0)7412676432	-	-
-	-	-	-	-
-	-	-	-	-
-	-	-	-	-

nationalgrid Electricity Distribution

TITLE
• High Street Car Park
• High Street
• Stonehouse GL10 2NG

DEVELOPER, BUILDER, ARCHITECT Drg. No.
O.S. MAP.
SCALE 1:125 @ A3
PARISH, 11KV DIAG.
LV. DIAG.
PLAN No.

UNDERGROUND CABLES
132KV 33KV 11KV
LV. SERVICE STREET LTG.
HV EARTH LV EARTH EARTH ELECTRODE

OVERHEAD LINES
132KV 33KV 11KV
11KV LV. SERVICE STREET LTG.

SERVICES CABLE SIZES AS SHOWN
PYLON POLE STAY

DUCT & ALKATHENE TUBE
SURF TELECOMS S S PILOT CABLES P P

PROPOSALS
ALTERATIONS DISMANTLED

TRAFFIC SENSITIVE AREA YES/NO

HOUSE METER POSITIONS - EXTERNAL INTERNAL

PLAN No.

Enq No.	4799828	of
---------	---------	----

London Road Car Park

Street: London Road	Latitude: 51.7424252397819
Post code: GL5 2AJ	Longitude: -2.214842688954932
Town: Stroud	Number/Type of EVCP: 2x dual 7kw Gecko + 1 passive using DNO supply; 1x dual 22kw – power supply from multistorey

Notes: Power supply from multistorey car park next door for dual 22kw EVCP.

100 amp total per phase

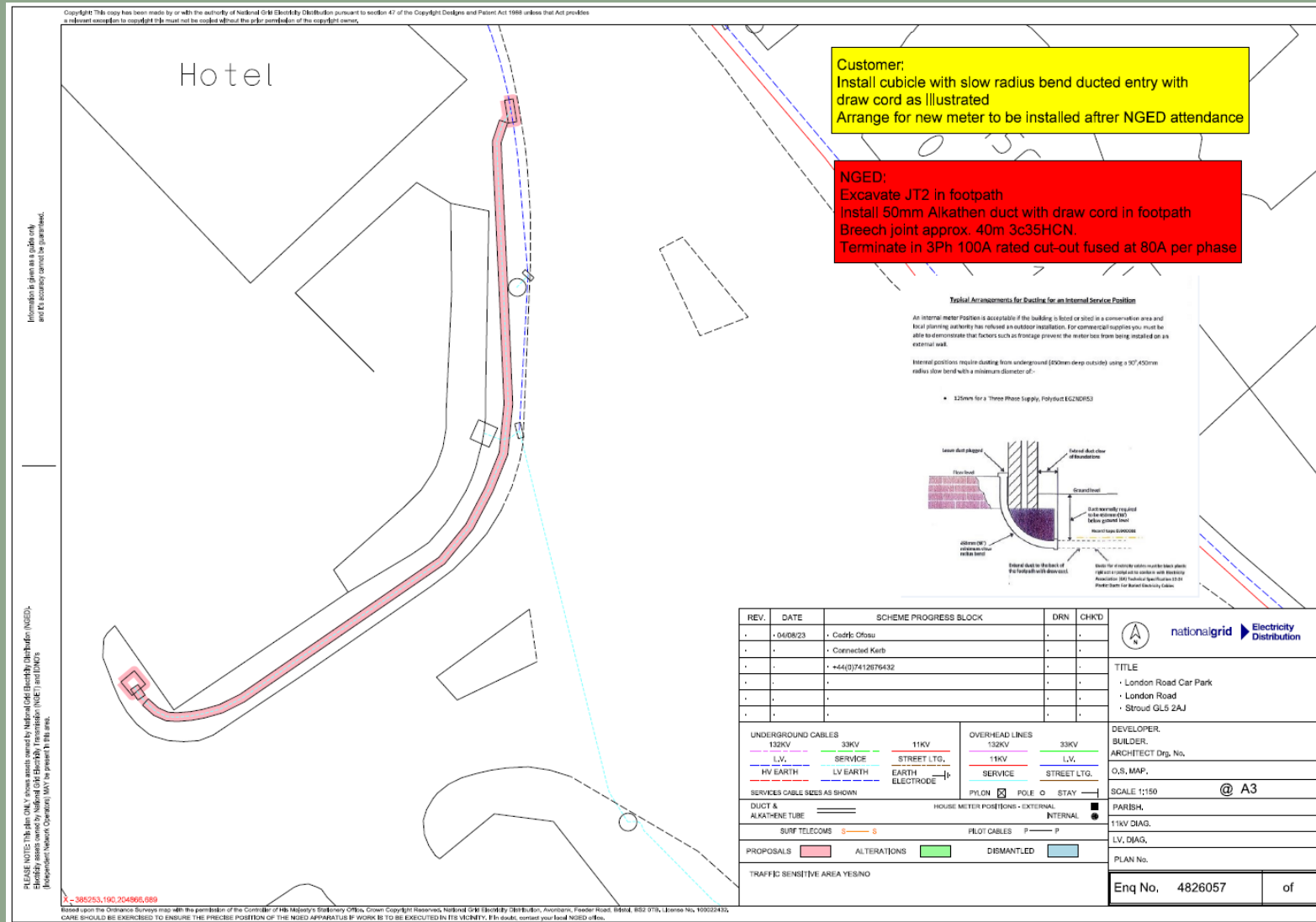
PHASE 1 - 25 AMP AVERAGE

PHASE 2 - 13 AMP AVERAGE

PHASE 3 - 17 AMP AVERAGE

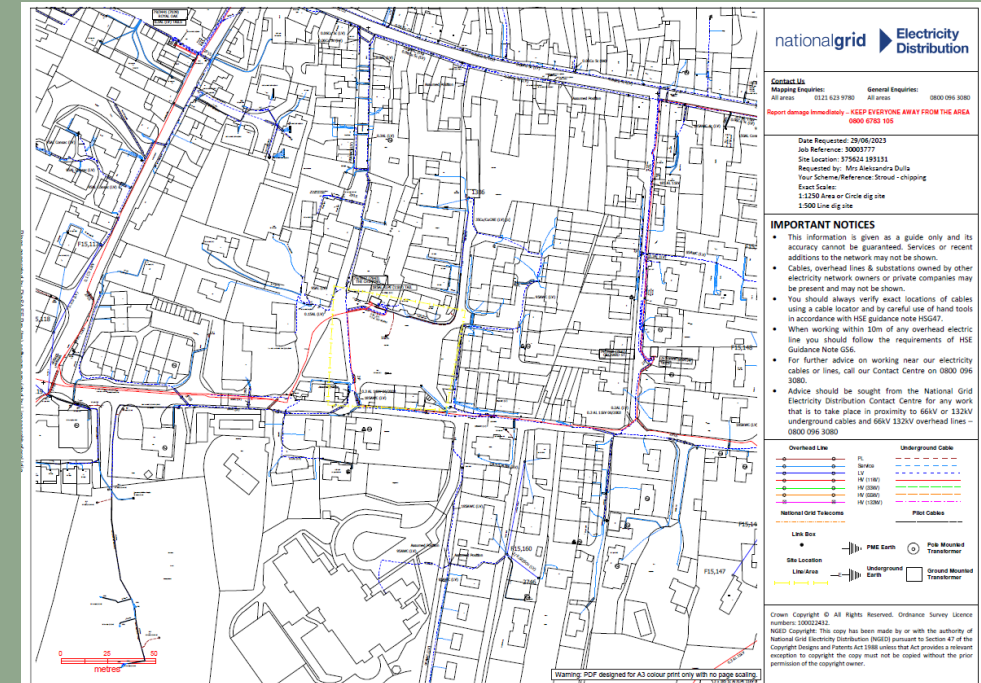
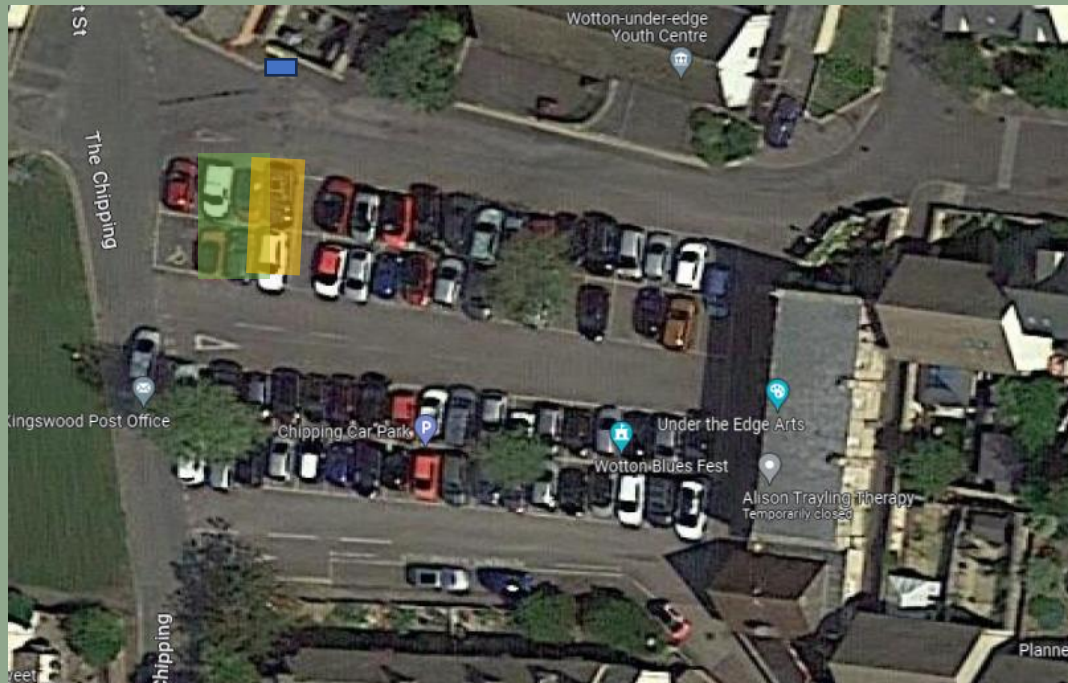


London Road Car Park



Chipping Street Car Park * pending review

Street: Chipping Street	Latitude: 51.63667450835871
Post code: GL12 7AD	Longitude: -2.353821260144362
Town: Wotton under Edge	Number/Type of EVCP: 1 x dual 7kw Gecko + 1x passive
Notes: Very small bays. Stroud DC will rearrange bays to accommodate EVCPs. Potentially bays will be positioned horizontal. Protective bollard for EVCP. Feeder pillar located by the substation	

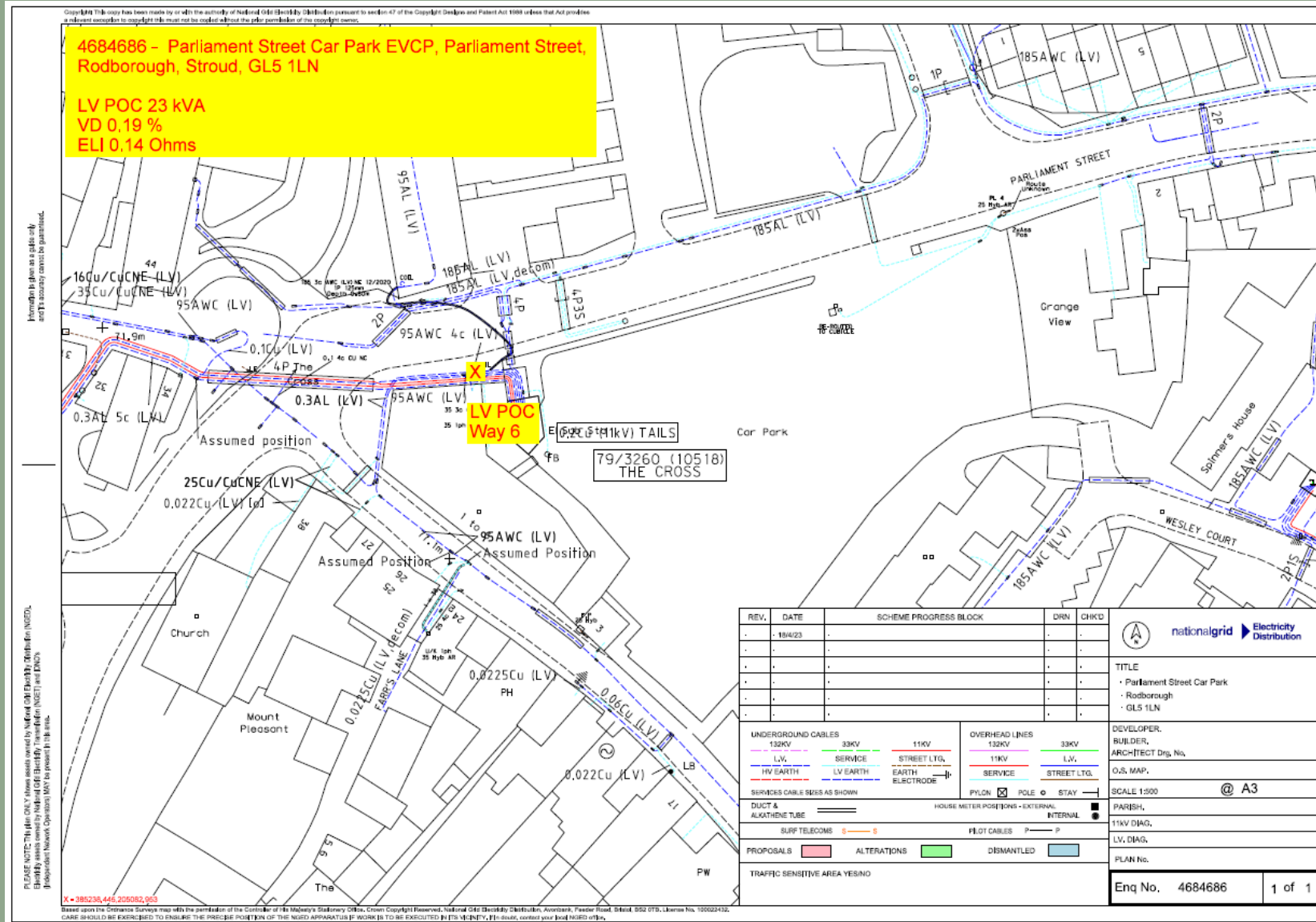


Parliament Street Car Park *rejected

Street: Parliament Street	Latitude: 51.7451334349978
Post code: GL5 1LN	Longitude: -2.2134778018884838
Town: Stroud	Number/Type of EVCP: 1 x dual 7kw Gecko
Notes: Single Phase 100Amp supply, 35kVa	



Parliament Street Car Park *rejected



Further Operational Notes:

- Berkeley, Marybrook Street Car Park – The line capacity at the connection point is limited and therefore there is no scope to increase the number of chargers, or to futureproof potential demand, by reserving supply capacity.
- Dursley, May Lane Car Park – Rather than install one 22kw dual charger, we are planning to install two 7kw dual chargers, with further future proofed capacity should demand increase. There is no viability to use the supply from the toilet block on site.
- Nailsworth, Newmarket Road Car Park – As per Dursley, rather than install one 22kw dual charger, we are planning to install two 7kw dual chargers, with further future proofed capacity should demand increase.
- Painswick, Stamages Lane Car Park – As per Dursley and Nailsworth, rather than install one 22kw dual charger, we are planning to install two 7kw dual chargers, with further future proofed capacity should demand increase. We're aware of requests from within the community for charging, so expect some early demand. Again there is no viability to use the power supply from the toilets.
- Stonehouse, High Street Car Park – The connection point is close to an electricity sub station, adjacent to the car park. However, it is complicated by the ownership of the land where connection is indicated. Currently we believe this to be private, which will require potential licences to be sought before commencement. A further complication is the access to the medical centre by vehicle and the ongoing discussions to adjust the parking regulations in line with higher use.
- Stroud, London Road (Surface) Car Park – London Road CP to become a charging hub, utilising the available capacity from the supply to the multistorey car park to power a faster 22kw charger. This is to be located just outside the entrance to the multistorey car park. At the entrance, we plan to utilise the DNO connection for a further x4 charging bays, with future proofed capacity built in.
- Stroud, Parliament Street Car Park – the available connection points are significantly below the level of the car park, which would require substantial civil engineering works to introduce charge points. On this basis, Parliament Street Car Park has been withdrawn from the phase 1 roll out plan.
- Wotton under Edge, The Chipping Car Park – spaces at this car park are tight and identifying a suitable location to site the feeder pillar and chargepoint column has been challenging. The live plan is to reconfigure the layout slightly, whilst ensuring the EV bays are located within a long stay section of the car park. However consideration is also being given to Potters Pond Car Park and the new Symm Lane Car Park, as referred to in the report.